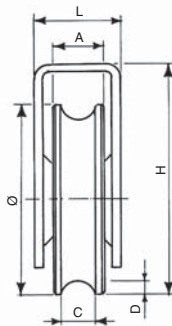


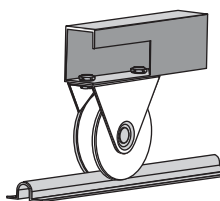
**item 141/8/20 and Omega profile**  
traveling wheel for sliding ports

- item 141/8/20
- single-bearing wheels with a diameter of 80 mm serve to ensure the movement of the port along Omega profile. Carrying capacity of 2 wheels for ports up to 400 kg
- surface treatment by zinc-coating
- packed individually
- Omega profile is delivered per 3 or 6 m



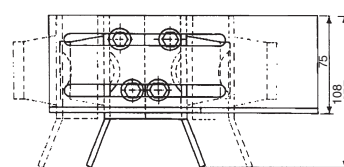
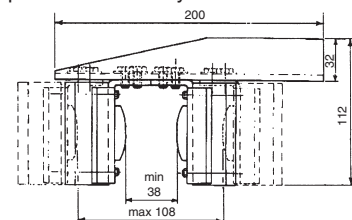
Item	Diameter [mm]	Weight [g]	Min. order packing [ks]	Max. load* [kg]	Dimensions [mm]					
					A	C	D	H	L	
<b>1-bearing traveling wheel</b>										
141/7/20	70	730	12	400	20	16	8	90	36	
141/8/20	80	890	1	400	20	16	8	95	36	
141/9/20	90	1 090	12	400	20	16	8	100	36	
141/10/20	100	1 300			105					
141/8/25	80	850			95					
141/10/25	100	1 310			105					
<b>2-bearing traveling wheel</b>										
141/10/32/2	100	1 730	8	600	32	20	10	102	41	

— identified items in table - on stock



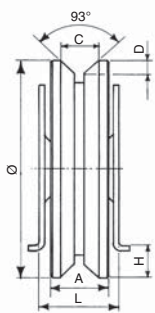
**item 161.2**  
upper end stop

- designed to block the upper edge of the port in closed position
- equipped with two nylon rolls for smooth guidance of the port
- nozzle of the stop is extended ensuring reliable parking of the port even under difficult weather conditions
- surface treatment by zinc-coating
- packed individually



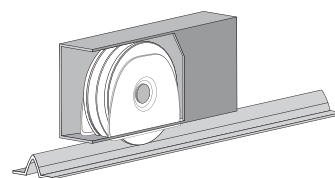
**item 130/8/20 a 130/10/20**  
traveling wheel for sliding ports

- item 130/8/20
- traveling wheel with 80mm diameter
- item 130/10/20
- traveling wheel with 100mm diameter
- wheels are designed to guarantee the gate sliding along V-profile
- each wheel is equipped with one bearing and console for the assembly weld
- max. port weight allowed with the use of 2 wheels is 400 kg
- surface treatment by zinc-coating
- packed individually



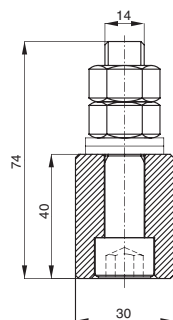
Item	Diameter [mm]	Weight [g]	Min. order packing [ks]	Max. load* [kg]	Dimensions [mm]					
					A	C	D	H	L	
130/8/20	80	800	1	400	20	13	4	12	33	
130/10/20	100	1 200	1	400	20	13	4	22	33	

— identified items in the table - on stock



**VV-N / VV-M**  
nylon guide roller / brass guide roller

- determined for upper guiding of the port
- surface treatment of metal parts by zinc-coating
- packed individually
- VV-N nylon roller
- VV-M brass roller



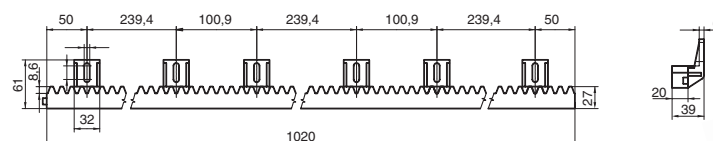
**Racks**  
Carrying carts  
Types for sliding ports



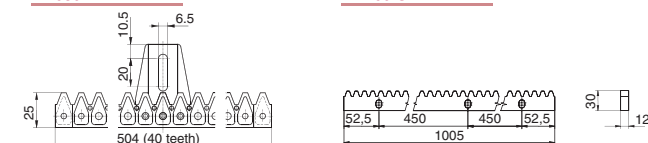
**HR100.N / HR050.N / HR100.O**  
nylon and steel racks

- HR100.N
- nylon rack with steel core 10 × 10 mm, length 1 m
- guarantees silent running; therefore especially suitable for private home ports
- delivered including self-drilling erection bolts and pads for ports up to 800 kg
- HR050.N
- geared nylon rack with 5 supporting clips, length 2 × 0, 5 m
- delivered including self-drilling erection bolts, with square pads into the rack clips, M4
- for ports up to 350 kg
- HR100.O
- steel rack with dimensions 30 × 12 mm, length 1 m, surface treatment by cold galvanizing
- appropriate for industrial ports with continuous use
- delivered including hob erection bolts
- for ports up to 1 200 kg

HR100.N



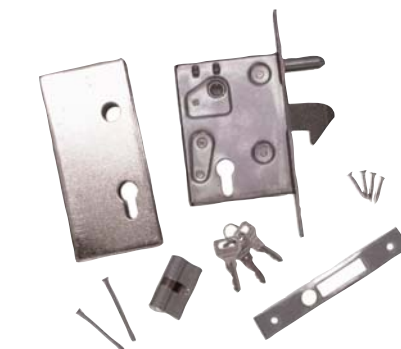
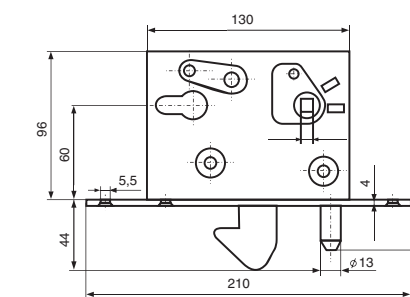
HR050.N



HR100.O

**item 156**  
hook-shaped lock and assembly box for the lock

- lock for the lockout of manually sliding self-supporting or sliding port in closed position
- equipped with cylindrical insert with 3 keys
- surface treatment by zinc coating
- lock as well as box are packed individually



**Fittings**  
for sliding and self-supporting

**TECHNOPARK®**  
www.technopark.cz

**Types for sliding ports**

See Catalogue of Fittings for other types of wheels and accessories for the manufacture of ports and gates available

Series 444  
for private

# VO 444

VO 444 - carrying cart set 1500 mm long, bush bearings, zinc coated (max. loading 300 kg), for a passage of 4,5 m



- profile with 4 mm wall will enable you to take the port to 4,5 m clear width of the passage and to 300 kg weight of the port (delivered in 6 m, black)
- small dimensions will enable you to construct really elegant, light ports
- one cart is sufficient for the whole port— easily installed, no need for complicated
- and a really competitive price
- plastic sealing of the profile U 444
- docking area has two milled longitudinal holes for comfortable erection and a rubber stop to ensure trouble free parking of the port
- TECHNOPARK patent solution
- the profile is covered to protect it from winter snow
- the series 444 is best used in conjunction with the KOCH set of drives
- we recommend these adhesives at excellent prices:
  - 74011BD - 380 ml to -5 °C, profi pack
  - WITHER 410 - 410 ml to -20 °C
  - BRM 10 - threaded rods M10

### Fitting - series 444



**KA 444** docking point for stop wheel  
**CP 444 / CP 444.Z** C profile, length 6 m, black / zinc-dipped  
**U 444** plastic sealing of the CP 444 profile  
**KO 444** stop wheel  
**74011BD** chemical anchor, profi pack 380 ml

VO 444 CP 444

Series 555  
for general use

# VO 555 / VO 555.N

VO 555 / VO 555.N - carrying cart, bush bearings, for a passage of 6,5 m



- VO 555 - carrying swinging cart with high clearance with the setting in both axis, bush bearings, zinc-coated (2 pieces for max. loading 600 kg), max. carrying 6,5 m
- VO 555.N - carrying swinging cart with high clearance with the setting in both axis, bush bearings, zinc-coated with nylon wheels (2 pieces for max. 600 kg), max. carrying 6,5 m
- robust carts are designed for heavy operation
- increased number of bearings will extend the life-span of your port
- plastic sealing will protect against the snow in winter
- profile wall thickness 5,5 mm is highly above-standard
- profile covered with plastic sealing
- we recommend the drive NYOTA 115, ROBO KCH
- we recommend these adhesives at excellent prices:
  - 74011BD - 380 ml to -5 °C, profi pack
  - WITHER 410 - 410 ml to -20 °C
  - BRM 12 - threaded rods M12

### Fitting - series 555



**KA 555** Docking point for stop wheel  
**CP 555 / CP 555.Z** C profile, length 6 m, black / zinc-dipped  
**U 555** plastic sealing of the CP 555 profile  
**KO 555** stop wheel  
**DK 555** console for docking attachment to the wall KA 555

VO 555 Poke attachment KA 555

Series 601  
for businesses

# VO 601

VO 601 - carrying swinging cart for commercial companies and the public sector (cart loading is 800 kg), for a passage of 10 m



- strong profile will carry-up 800 kg to 10 m (delivered in 6 m, black and zinc dipped) at a very good price
- ideal for commercial and manufacturing companies, warehouses and institutions
- 2 robust double swinging carts are designed for heavy operation
- increased number of bearings extends the life-span of your port
- a profile wall thickness 5,5 mm is ideal
- plastic sealing of the CP 555 / CP 555.Z profile
- docking point has milled 2 longitudinal holes for easy assembly and a rubber stop for trouble free parking of the port
- we recommend the THOR or NYOTA 115 drive
- the covered profile protects it in winter against snow

### Fitting - series 555



**KA 555** Docking point for stop wheel  
**CP 555 / CP 555.Z** C profile, length 6 m, black / zinc dipped  
**U 555** plastic sealing of profile CP 555  
**KO 555** stop wheel  
**DK 555** console for docking attachment to the wall KA 555

VO 601 CP 555

Series 666  
for production

# VO 666

VO 666 - double carrying swinging cart for transport and manufacturing plants (loading 200 kg), for a passage of 15 m



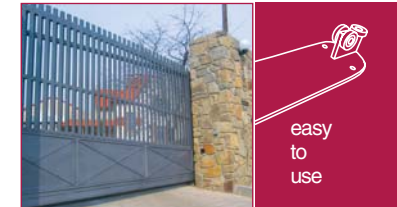
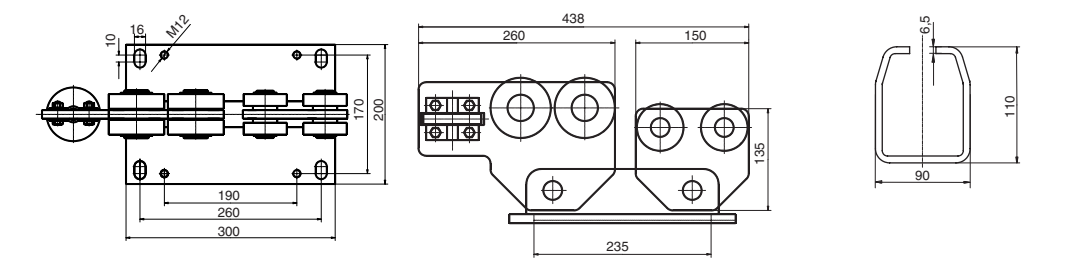
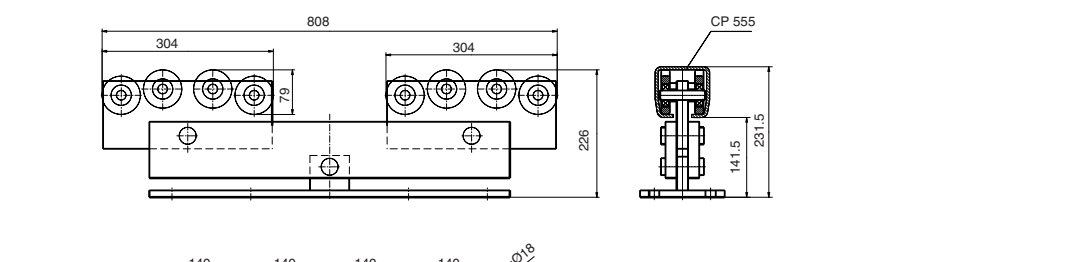
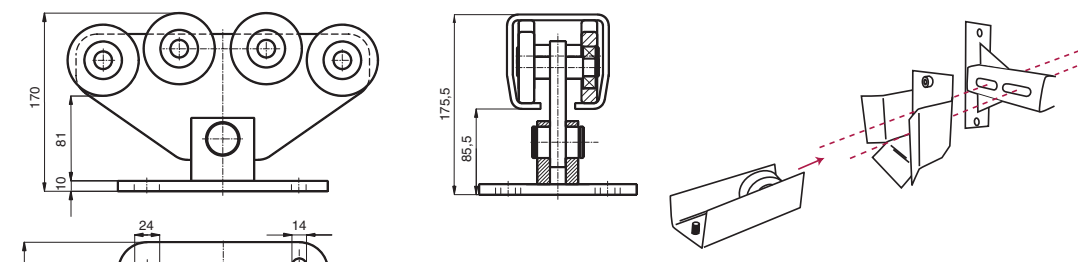
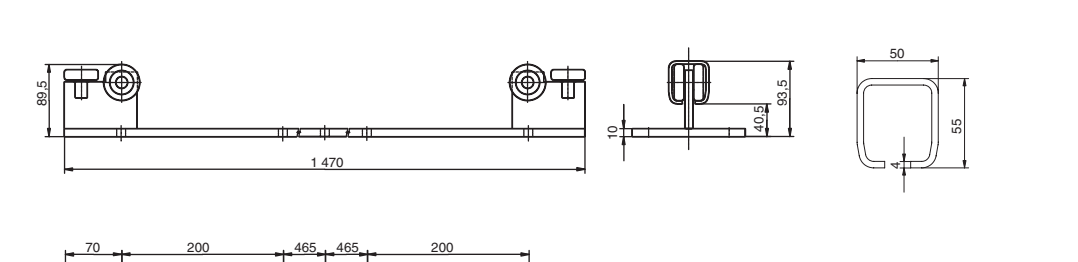
- reinforced supporting profile (wall 6,5 mm) will enable the port to be carried 15 m width clear of the passage with 1200 kg of overall port weight (delivered in 6 m, zinc coated)
- 2 large carts with 2 plugs
- stop wheel delivered with the profile cover
- removable closure of the profile with profile cover
- docking point has milled 2 longitudinal holes for easy assembly and a rubber stop for trouble free parking of the port
- we recommend the MEC 200 and FIBO 400 drive
- the covered profile protects it in winter against snow

### Fitting - series 666



**KA 666** Docking point for stop wheel  
**CP 666** C profile, length 6 m, black / galvanic zinc-coating  
**UP 666** removable closure C profile  
**KO 666** stop wheel

VO 666 CP 666



easy to use



high user comfort



high user comfort



high user comfort